



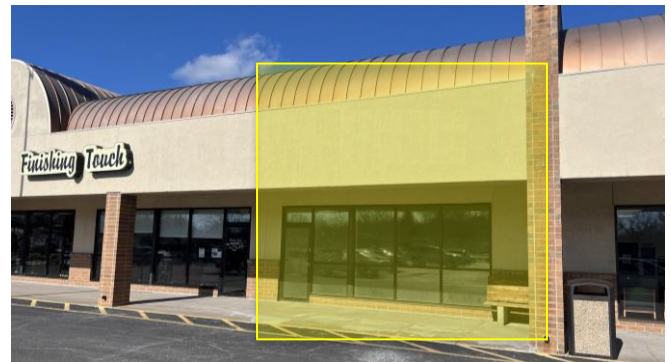
# 617 Avenue of the Cities

East Moline, Illinois 61244

Price: \$10.00 PSF NNN

## PROPERTY FEATURES

- Last remaining suite for Lease in the Ridgewood Shopping Center (Suite 617)
- Flexible lease terms
- Located on signalized intersection with high traffic counts
- Highly visible from Avenue of the Cities (19,500 VPD)
- Ample parking
- Pylon and building signage available
- Strong mix of national and local co-tenants
- Zoned B-2



### DETAILS

AVAILABLE SF:	2,500 SF
PRICE PER SF:	\$10.00 PSF NNN
TOTAL OPERATING EXPENSES	\$4.00 PSF
LOCATION:	RIDGEWOOD SHOPPING CENTER
BEST/PRACTICAL USE:	RETAIL/OFFICE

NO WARRANTY OR REPRESENTATION, EXPRESS OR IMPLIED, IS MADE AS TO THE ACCURACY OF THE INFORMATION CONTAINED HEREIN, AND THE SAME IS SUBMITTED SUBJECT TO ERRORS, OMISSIONS, CHANGE OF PRICE, RENTAL OR OTHER CONDITIONS, PRIOR SALE, LEASE OR FINANCING, OR WITHDRAWAL WITHOUT NOTICE, AND OF ANY SPECIAL LISTING CONDITIONS IMPOSED BY OUR PRINCIPALS NO WARRANTIES OR REPRESENTATIONS ARE MADE AS TO THE CONDITION OF THE PROPERTY OR ANY HAZARDS CONTAINED THEREIN ARE ANY TO BE IMPLIED.

UPDATED: 8/01/22

5111 Utica Ridge Road  
Davenport, IA 52807  
563 355 4000  
[ruhlcommercial.com](http://ruhlcommercial.com)





**ETHAN SIMONS**  
Commercial Sales Associate  
call or text: 309.281.9183  
email: [esimons@ruhlcommercial.com](mailto:esimons@ruhlcommercial.com)