



Property Highlights

- 2.5-Acre Parcel
- **Building 1:** 10,133 SF Office/Warehouse with 1,458 SF office, 675 SF mezz and 8,000 SF warehouse with 16' sidewalls and two 14' x 12' OH doors
- **Building 2:** 2,304 SF (48'x48') heated garage/shop with two OH doors
- **Building 3:** 1,602 SF single-family home/caretaker residence
- Main building has in-floor radiant heat, new roof in 2001, modern finishes in the office space
- Potential for buyer to subdivide and sell or lease single-family residence for additional income
- Priced well below assessment

3 Building Parcel

5002 N. Pine St., Davenport, IA

FOR SALE

\$940,000

Details

Parcel	U0939-01C
Lot Size	2.5 Acres
Taxes	\$32,546 (2024)
Zoning	C-1

For more information, please contact:



ETHAN SIMONS

Commercial Sales Associate

c: 309-281-9183

e: esimons@ruhlcommercial.com



JEFF WEHR

Ruhl&Ruhl REALTORS

c: 563-320-2298

e: jeffwehr@ruhlhomes.com

📍 5111 Utica Ridge Road | Davenport, Iowa 52807

☎ 563-355-4000

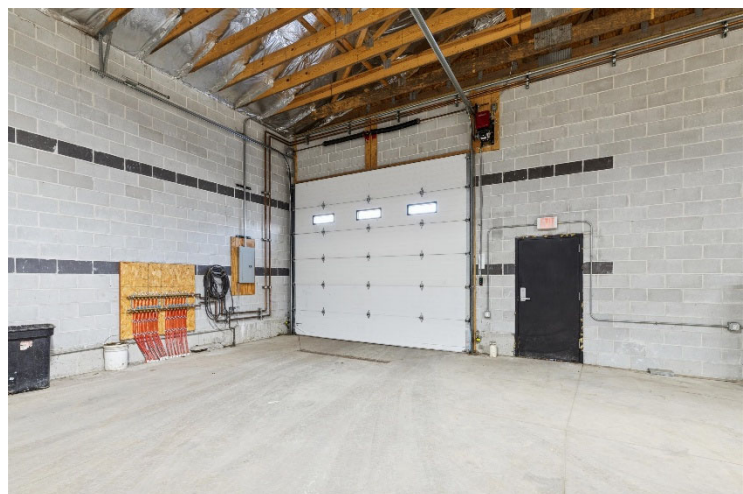
🌐 ruhlcommercial.com



For Sale

2.5 Acres

3-Building Parcel



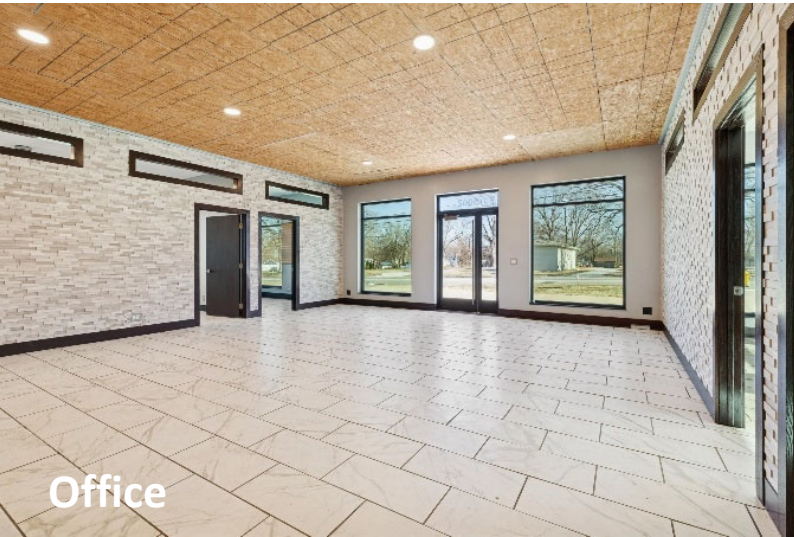
For more information, please contact:



ETHAN SIMONS
 Commercial Sales Associate
 c: 309-281-9183
 e: esimons@ruhlcommercial.com



JEFF WEHR
 Ruhl&Ruhl REALTORS
 c: 563-320-2298
 e: jeffwehr@ruhlhomes.com



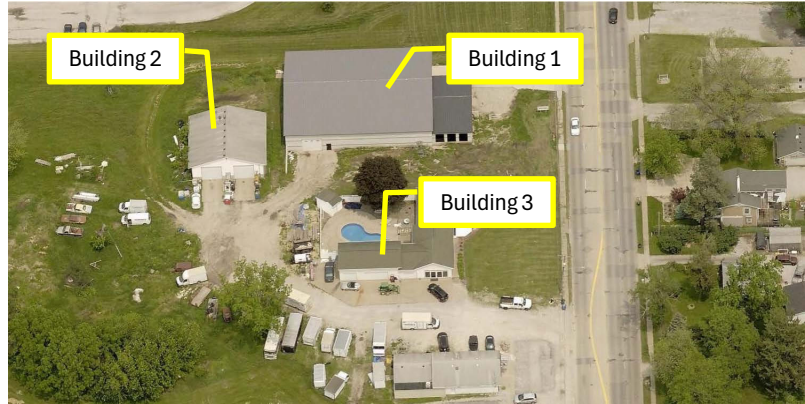
Office



Office



Warehouse



For more information,
please contact:



ETHAN SIMONS
Commercial Sales Associate
c: 309-281-9183
e: esimons@ruhlcommercial.com



JEFF WEHR
Ruhl&Ruhl REALTORS
c: 563-320-2298
e: jeffwehr@ruhlhomes.com