



403 W. 1st Street
Wilton, IA 52778

Price: \$1,225,000

Property Features

- 40,890 SF Industrial building and 9,548 SF storage garage constructed in stages from 1989 to 2016
- Site is 4.38 acres; Zoned M-1
- 676,774 gallon tank installed 2013 and a 685,234 gallon tank installed 2016
- Building features 1,500 SF of Office space, 16' to 37' ceilings, five Overhead doors and one dock door
- Two 600-amp, 3-phase electrical panels, plus additional subpanels
- Recent updates include new LED lighting



- Property is rail-served by the Iowa Interstate Railroad with connectivity to all class-1 railroads
- Located in close proximity to Highway 38 and Interstate 80



Charlie Armstrong, SIOR
Vice President/Director
call or text: 563.529.6600
email: carmstrong@ruhlcommercial.com



Alex Kelly
Vice President/Director
call or text: 309.236.5489
email: akelly@ruhlcommercial.com

NO WARRANTY OR REPRESENTATION, EXPRESS OR IMPLIED, IS MADE AS TO THE ACCURACY OF THE INFORMATION CONTAINED HEREIN, AND THE SAME IS SUBMITTED SUBJECT TO ERRORS, OMISSIONS, CHANGE OF PRICE, RENTAL OR OTHER CONDITIONS, PRIOR SALE, LEASE OR FINANCING, OR WITHDRAWAL WITHOUT NOTICE, AND OF ANY SPECIAL LISTING CONDITIONS IMPOSED BY OUR PRINCIPALS NO WARRANTIES OR REPRESENTATIONS ARE MADE AS TO THE CONDITION OF THE PROPERTY OR ANY HAZARDS CONTAINED THEREIN ARE ANY TO BE IMPLIED.

UPDATED: 8/01/22

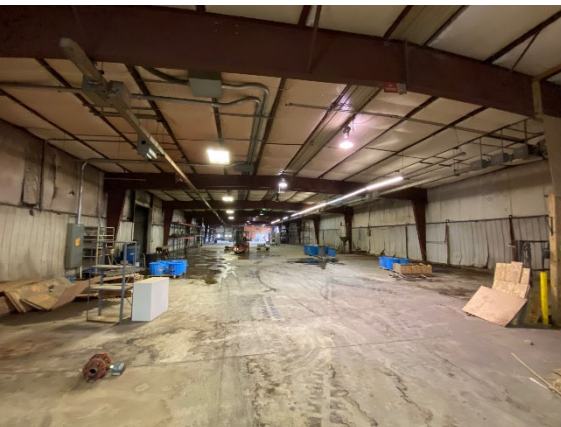
5111 Utica Ridge Road
Davenport, IA 52807
563 355 4000
ruhlcommercial.com

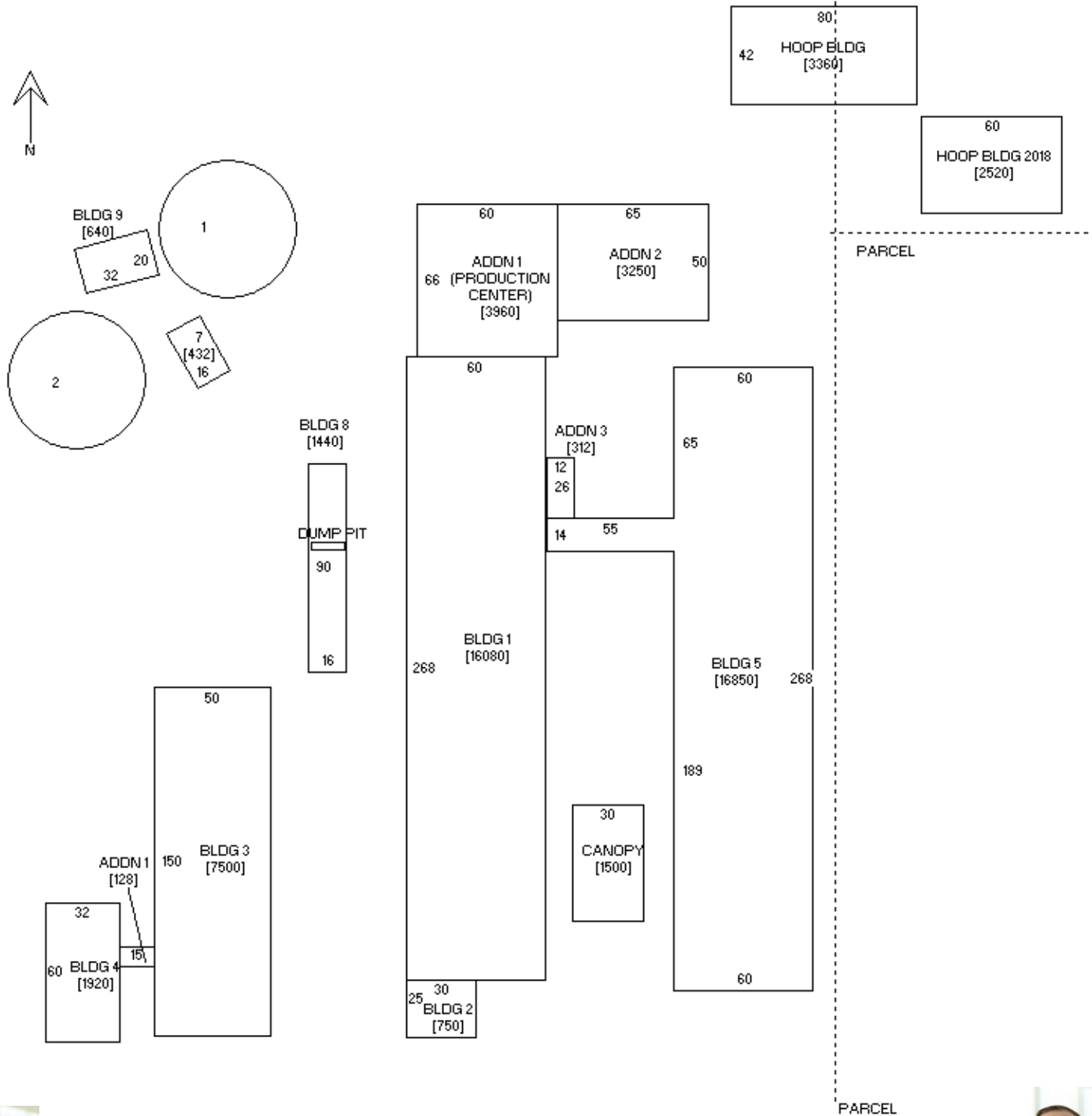


Located only 5.3 miles
(8 minutes) from I-80

Wilton

Durant





Charlie Armstrong, SIOR
 Vice President/Director
 call or text: 563.529.6600
 email: carmstrong@ruhlcommercial.com



Alex Kelly
 Vice President/Director
 call or text: 309.236.5489
 email: akelly@ruhlcommercial.com