

Property Features:

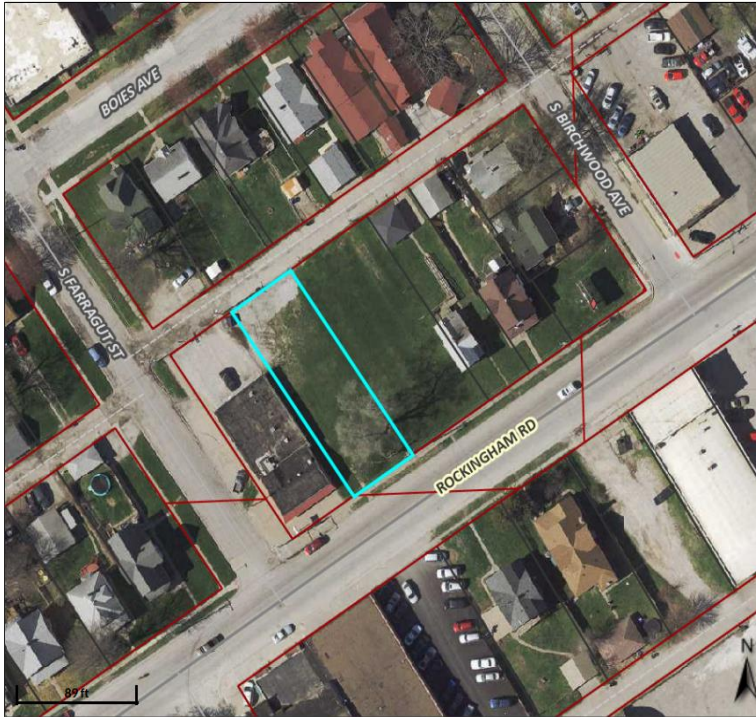
- 2 lots ready for development located on Rockingham Road.
- Approximately 17,250 SF / 0.39 Acres.
- Great visibility on highly traveled Rockingham Road, and easy access to US-61.
- Area is a strong mix of retail and neighborhood rooftops.
- Lots zoned C-2.
- Parcel Numbers J0043-02 and J0043-03.

Details:

For Sale:	2620-2626 Rockingham Rd. Davenport, IA \$75,000
Parcel Number:	J0043-02 & J0043-03
Lot Size:	Approximately 17,250 SF / 0.39 Acres
Taxes:	\$976.00
Zoned:	C-2
Price Per Square Foot:	\$4.35

NO WARRANTY OR REPRESENTATION, EXPRESS OR IMPLIED, IS MADE AS TO THE ACCURACY OF THE INFORMATION CONTAINED HEREIN, AND THE SAME IS SUBMITTED SUBJECT TO ERRORS, OMISSIONS, CHANGE OF PRICE, RENTAL OR OTHER CONDITIONS, PRIOR SALE, LEASE OR FINANCING, OR WITHDRAWAL WITHOUT NOTICE, AND OF ANY SPECIAL LISTING CONDITIONS IMPOSED BY OUR PRINCIPALS NO WARRANTIES OR REPRESENTATIONS ARE MADE AS TO THE CONDITION OF THE PROPERTY OR ANY HAZARDS CONTAINED THEREIN ARE ANY TO BE IMPLIED.

UPDATED: 8/01/22



SHAWN LANGAN

Vice President/Director

DIRECT: 563.823.5113

CALL OR TEXT: 563.343.6597

EMAIL: slangan@ruhlcommercial.com



PETE HADJIS

Commercial Sales Associate

OFFICE: 563.355.4000

CALL OR TEXT: 319.640.0527

EMAIL: phadjis@ruhlcommercial.com