



Property Highlights

- Located in a new TIF District in Downtown Rock Island
- Historical façade – unique Art Moderne building design
- 2 Levels
- Potential for bar, restaurant, outdoor café, showroom, retail space, and more
- Great views from large rooftop area; it had room for a 65-car display when the former car dealership opened in 1940
- Near government buildings

Redevelopment/ Former Dealership

1401 4th Avenue, Rock Island, IL

FOR SALE

\$245,000

BUILDING SIZE

15,000 SF

Details

Parcel	0-35-112-004
Taxes	\$852 (2023)
TIF District	Yes
Lot Size	0.3 Acres
Year Built	1940

For more information,
please contact:



THOMAS P. DALTON

Broker Associate

c: 563-529-1750

e: tdalton@ruhlcommercial.com



BUSINESS



6,432

Total Businesses



94,896

Total Employees

EMPLOYMENT

54.5%

White Collar



26.5%

Blue Collar



19.0%

Services



Unemployment Rate

INCOME



\$57,700

Median Household Income



\$33,619

Per Capita Income



\$124,078

Median Net Worth

2024 Households by income (Esri)

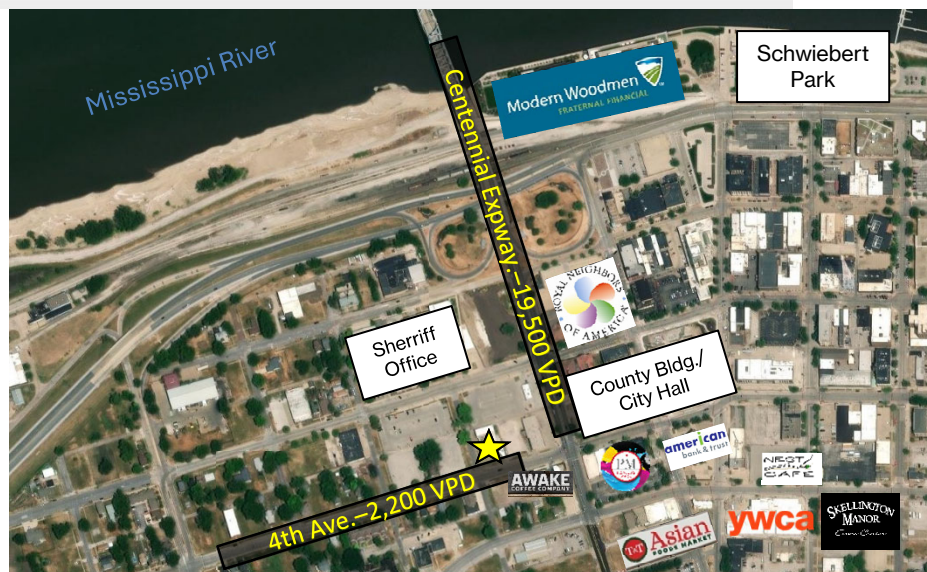
The largest group: \$50,000 - \$74,999 (19.1%)

The smallest group: \$200,000+ (4.0%)

Indicator ▲	Value	Diff	
<\$15,000	11.9%	+1.6%	
\$15,000 - \$24,999	7.5%	+0.7%	
\$25,000 - \$34,999	9.3%	+0.3%	
\$35,000 - \$49,999	13.7%	+0.3%	
\$50,000 - \$74,999	19.1%	+3.7%	
\$75,000 - \$99,999	12.6%	-2.8%	
\$100,000 - \$149,999	16.0%	-1.9%	
\$150,000 - \$199,999	5.9%	-1.3%	
\$200,000+	4.0%	-0.7%	

Bars show deviation from Rock Island County

Source: This infographic contains data provided by Esri (2024, 2029), Esri-Data Axle (2024). © 2025 Esri



THOMAS P. DALTON

Broker Associate

c: 563-529-1750

e: tdalton@ruhlcommercial.com